



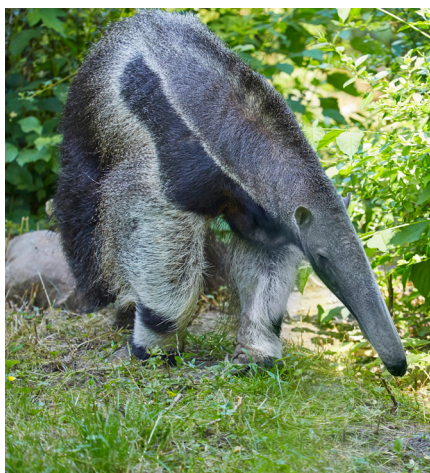
Vitality Insectivore Meal

Balanced Nutritional Feeds

Suitable for a wide range of Insectivores including Giant Anteaters, Aardvarks and Armadillos

Typical Analysis (unless stated values are expressed on a fresh weight basis)	
Crude Protein	32.5%
Crude Fibre	12.5%
Ash	8.16%
Starch	12%
Sugar	1.8%
NDF	17%
ADF	11%
Phosphorus	0.9%
Calcium	1.7%
Copper	25 mg/kg
Magnesium	0.12%
Iron	500 mg/kg
Salt	0.67%
Zinc	82 mg/kg
Selenium	0.25 mg/kg
Sodium	0.27%
Potassium	0.65%
Ca:P	1.89%
K:Na	1.7%
Oil B	11.6%
Lysine	1.4%
Methionine	0.76%
Taurine	0.2%
Threonine	1.12%
Thysine	1.52%
Tryptophan	0.31%
Vit A	8,000 IU/kg
Vit C	400 IU/kg
Vit D3	1,000 IU/kg
Vit E	960 IU/kg
Vit k	2 mg/kg
Formic Acid	0.1%

Typical Ingredients
 Insect Protein; Oats; Soya Hull Meal; Brewers Yeast; Egg Powder; Pea Protein; Prairie Meal; Shrimp Shell Meal; Cellulose; Ground Beet Pulp; Premix; Salmon Oil; Soya Oil; Formic Acid; Taurine. *Subject to change.*



Nutritional Benefits
 Principle protein source is of insect origin (Black Soldier Fly origin) – the closest available source to what these animals would thrive on in their natural habitat. Formulated with readily available ingredients.

Feeding Instructions

- Designed to be a complete diet. Usually mixed with water to form a paste.
- Good attention to food hygiene is important – Like all highly nutritious feeds, once this feed becomes wet it's a perfect substrate for harmful bacteria to thrive!

Product Description
 Pack size - 10kg White plastic bag
 Form - Fine ground meal
 Product Code - **3D008018010**
 Best Before - 6 Months from date of manufacture



Andrew Waterhouse - Senior Nutritionist
 07711007001 | 01270 782222 | andrew.waterhouse@waterhousefeeds.com